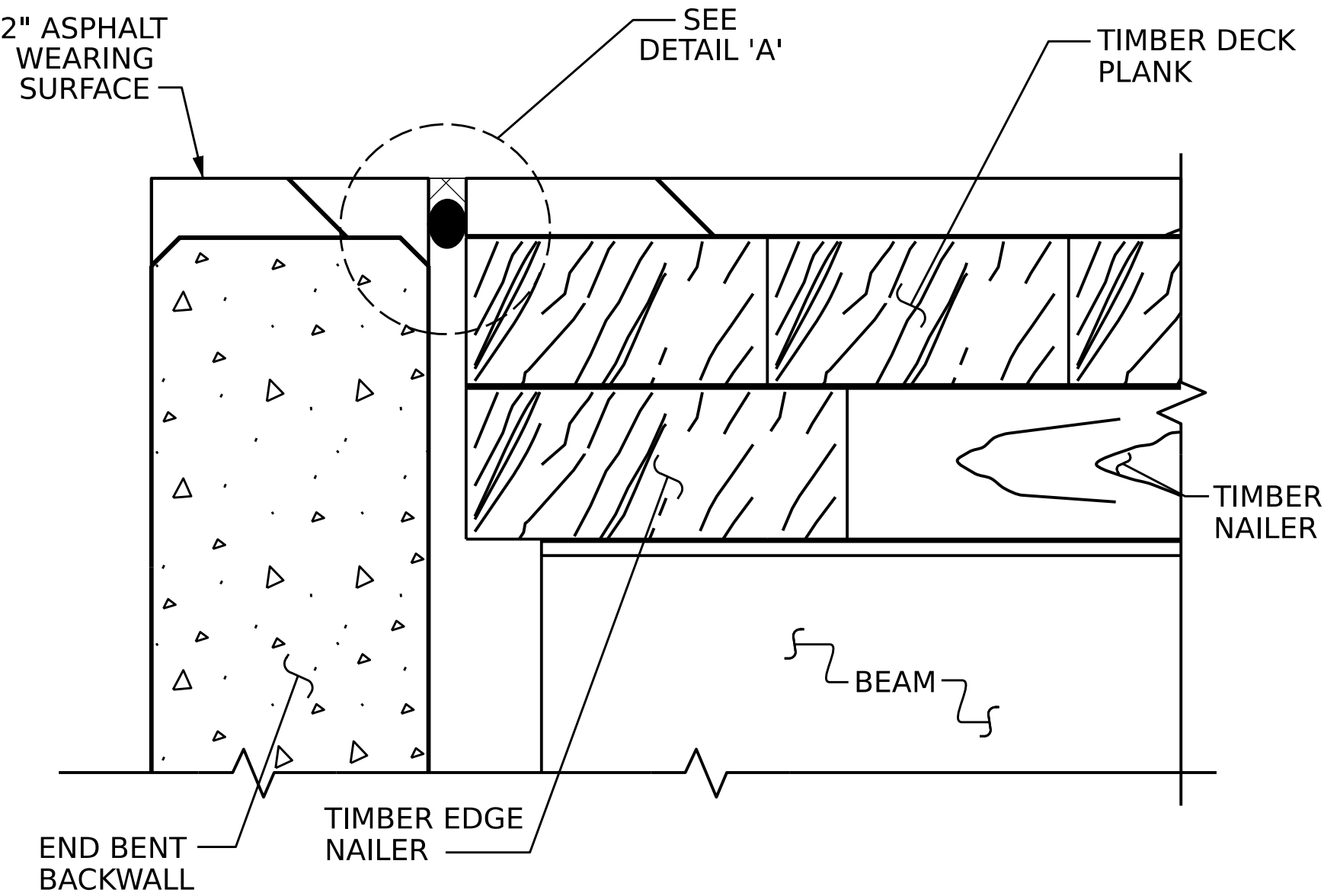
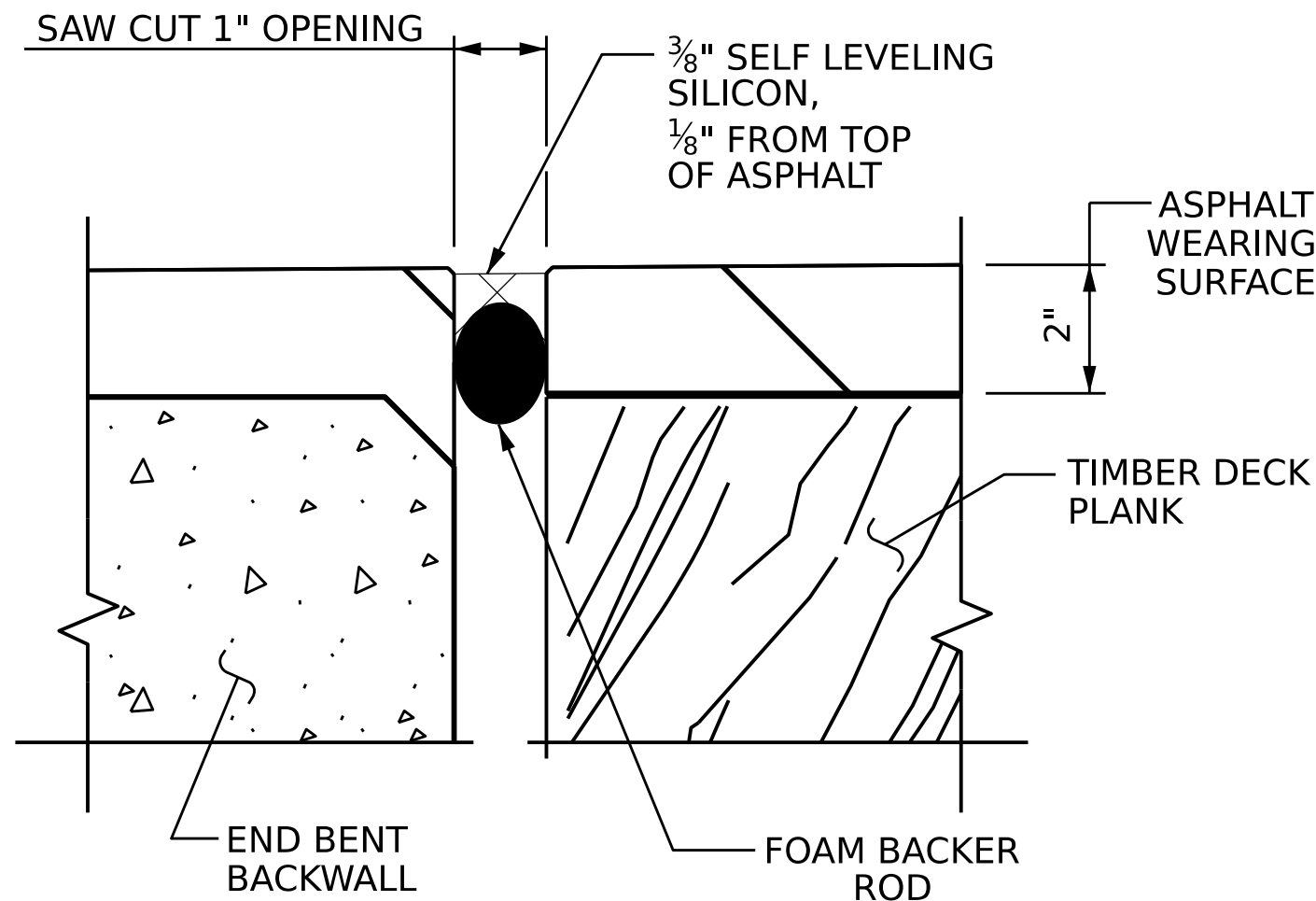


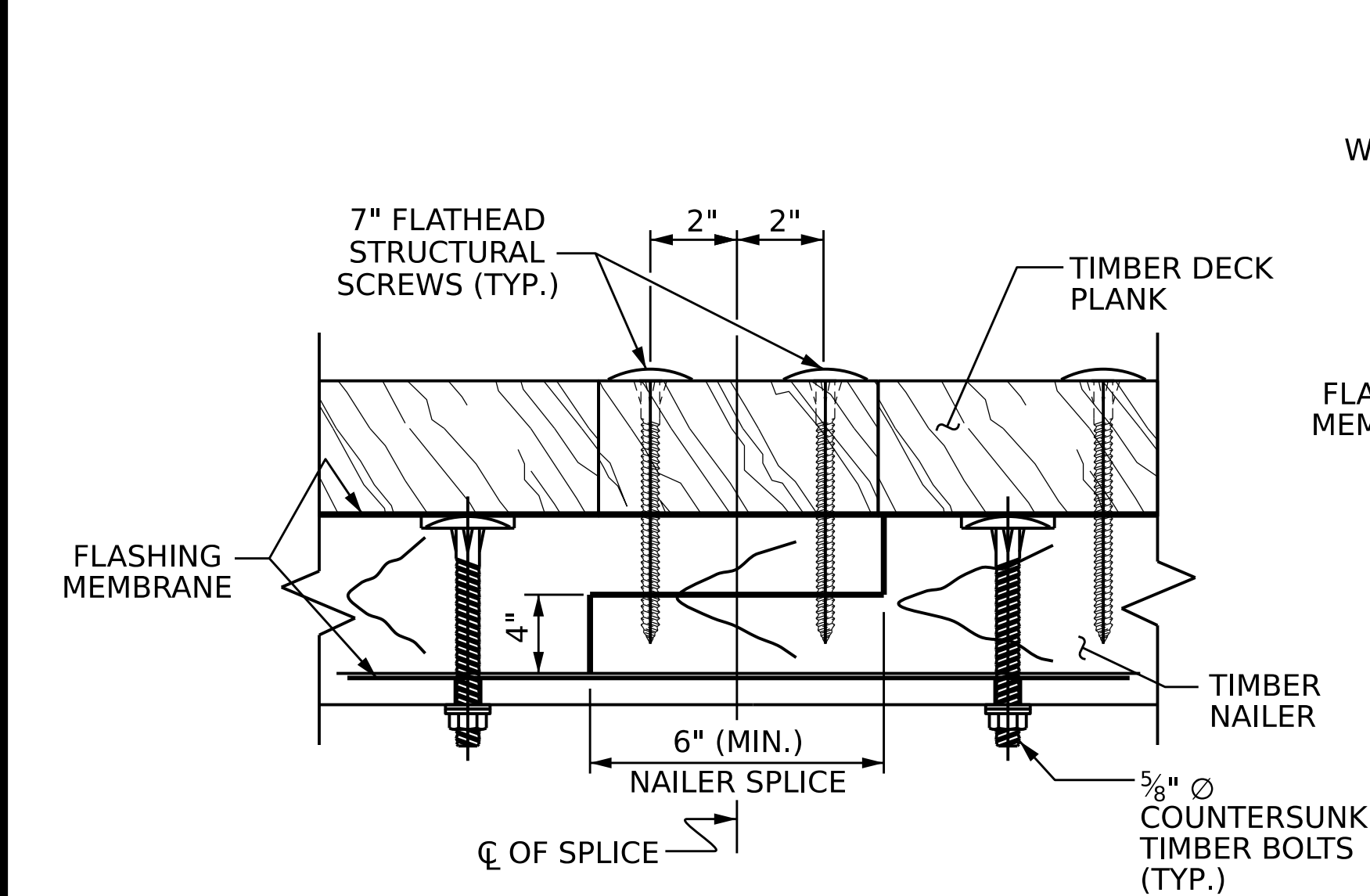
TYPICAL DECK DETAIL AT END BENT



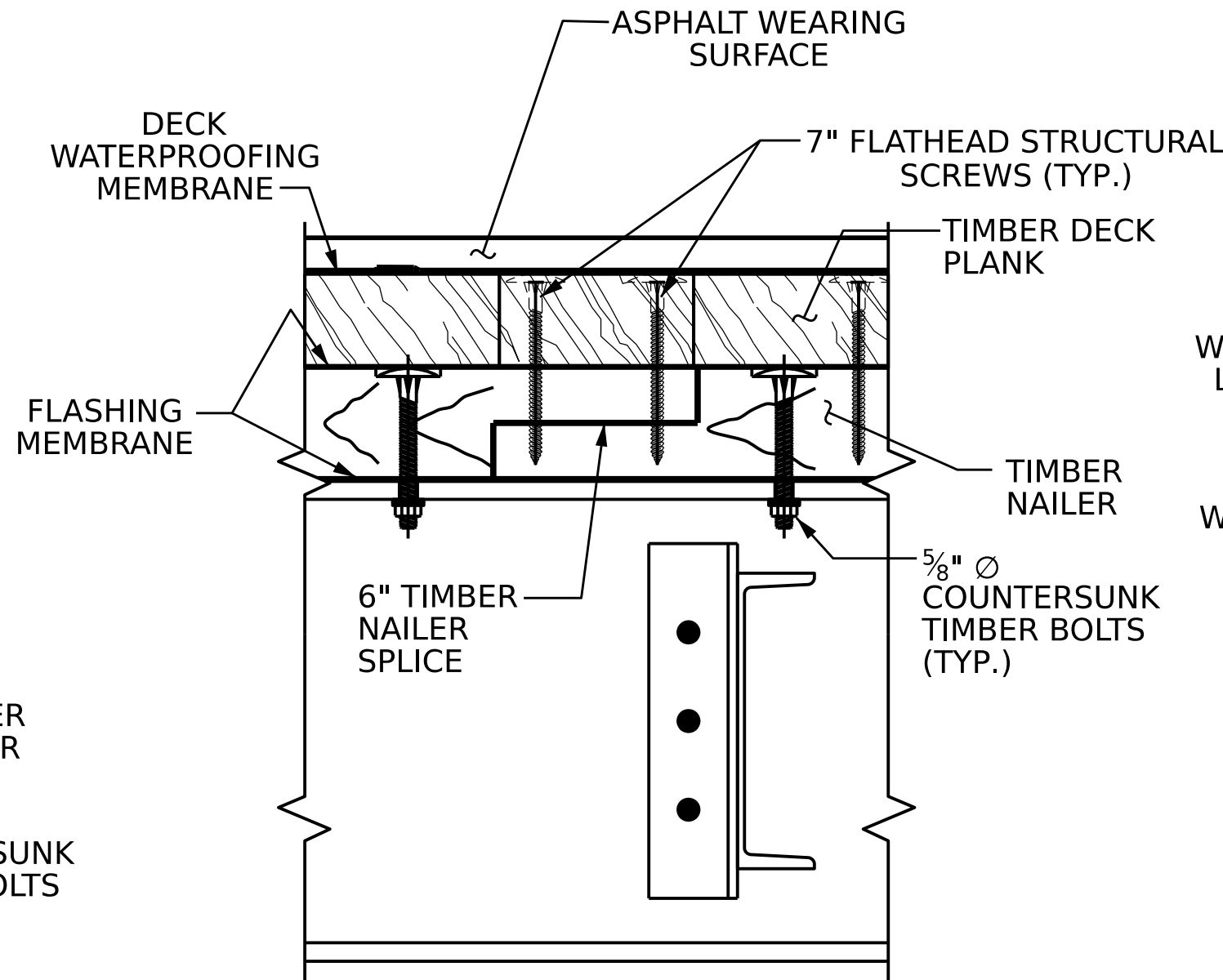
PROPOSED POURABLE SILICONE JOINT DETAIL



DETAIL 'A'

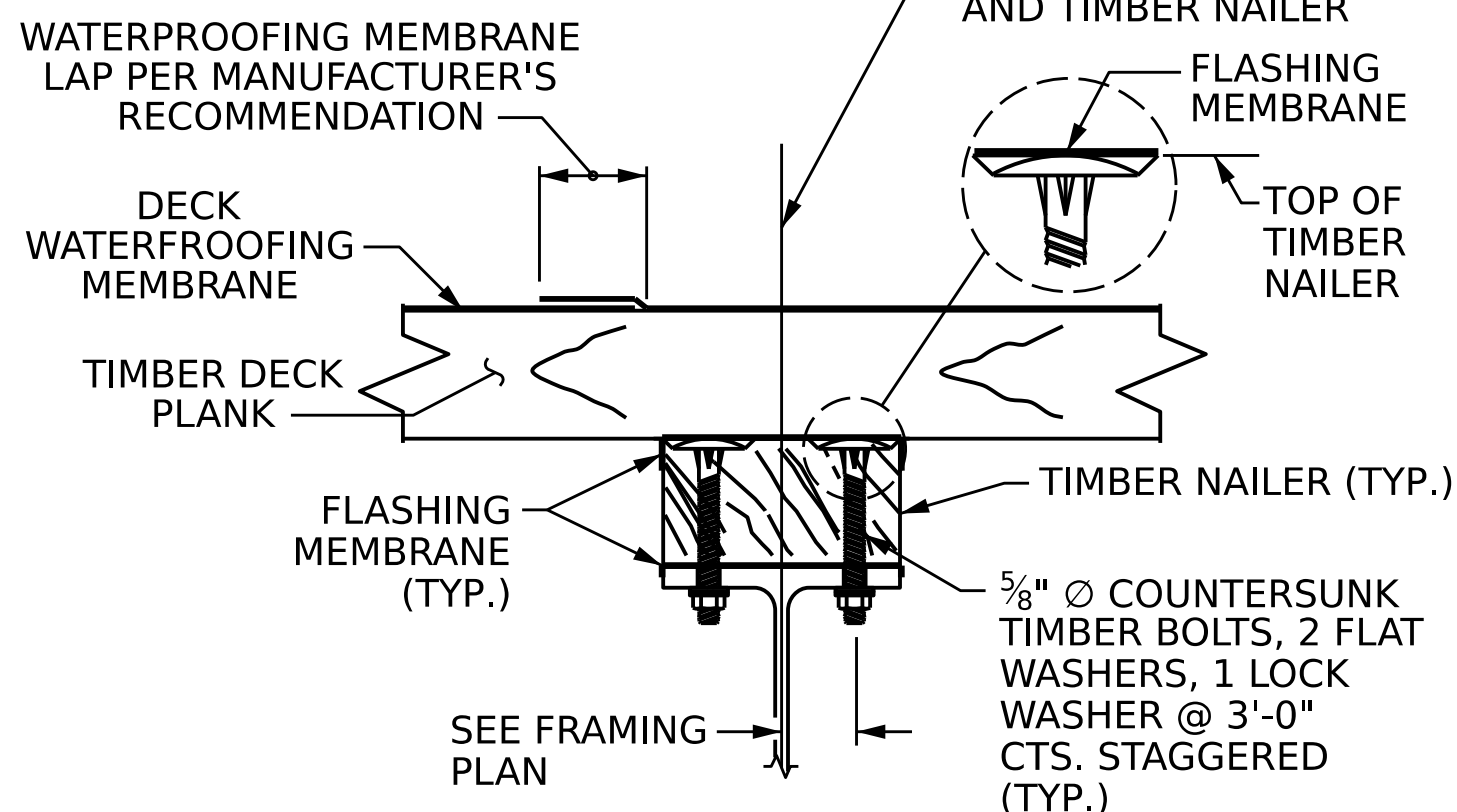


NAILER SPLICE DETAILS



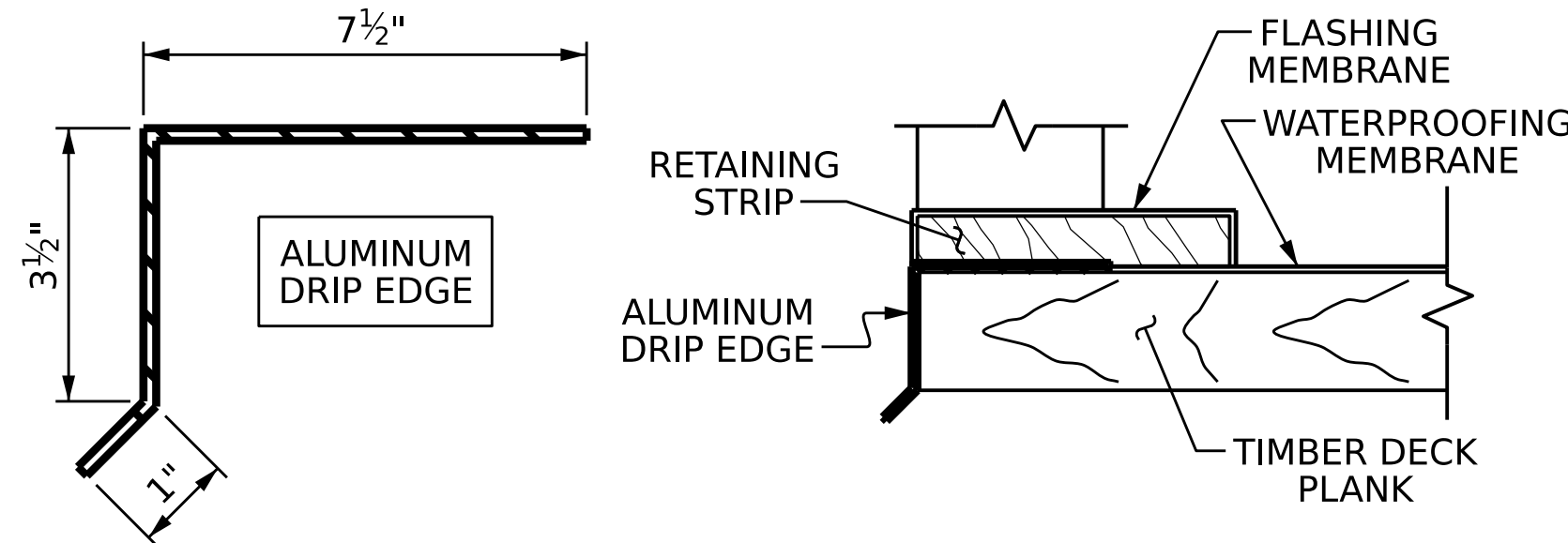
SECTION B-B

NAILER SPLICE & TIMBER PLANK ATTACHMENT DETAILS



SECTION A-A

TIMBER NAILER ATTACHMENT DETAILS



DRIP EDGDE DETAILS

POST AND BOLTS NOT SHOWN FOR CLARITY

PROJECT NO. DF18314.2045324

HENDERSON COUNTY

STATION: 11+67.50 -L-

SHEET 2 OF 2

ASSEMBLED BY:	ZCS	DATE :	6/25
CHECKED BY :	MGC	DATE :	7/25
DRAWN BY :	BNB	4/24	
CHECKED BY :	JDH	10/24	

9/23/2025  
c:\work\dlr\ncdot-pw.bentley.com\ncdot-pw-01\zachary.smith\d0458021\Working.dgn  
ZSmith

STATE OF NORTH CAROLINA

DEPARTMENT OF TRANSPORTATION

RALEIGH

STANDARD

SUPERSTRUCTURE

PLAN OF SPAN

DETAILS

DOCUMENT NOT CONSIDERED FINAL  
UNLESS ALL SIGNATURES COMPLETED

IGS

ENGINEERS

TGS ENGINEERS

201 W. MARION ST STE 200

SHELBY, NC 28150

PH (704) 476-0003

CORP. LICENSE NO.: C-0275

PROFESSIONAL ENGINEER

SEAL

20125

10/10/2025

MARSHALL G. CHECK JR.

REVISIONS						SHEET NO.
NO.	BY:	DATE:	NO.	BY:	DATE:	
1			3			S-9
2			4			
TOTAL SHEETS						13